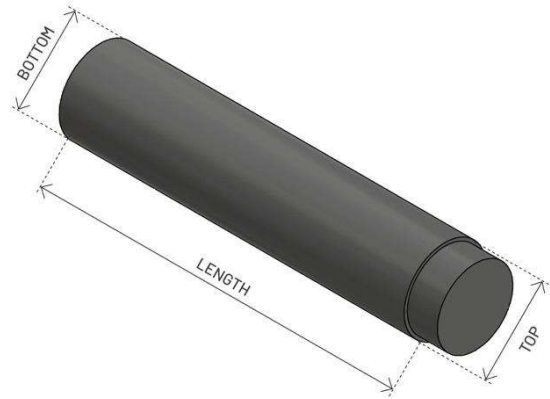


M2.06.01 rev.3 – 12th November 2024.

Table of ingots dimensions and weights.

All weights and dimensions must be considered indicative and related to steels.



Round Ingots

INGOT	SIDES n°	INGOTS PER HEAT		DIMENSIONS				TOTAL WEIGHT [kg]		WEIGHT WITHOUT TOP [kg]		BOTTOM WEIGHT	
				TOP Ø [mm]	BOTTOM Ø [mm]	LENGTH [mm]						Standard	Premium
		min	max			min	max	[kg]					
T310	-	11	12	300	310	4.130		2.550		2.400		N	
T380	-	7	8	370	380	4.350		3.900		3.780		N	
T420	-	6	8	420	420	4.310		4.750		4.580		N	
T480	-	5	6	480	480	4.280		6.200		5.920		N	
T540	-	4	5	540	540	4.320		7.900		7.600		N	
T600	-	3	4	610	620	3.910	4.330	9.300	10.200	8.930	9.830	N	
T680	-	3	4	670	670	3.890	4.300	11.100	12.200	10.550	11.650	N	
T800	-	2	4	800	810	2.960	4.460	12.500	18.400	11.420	17.320	N	
T900	-	2	3	890	890	2.580	3.970	13.500	20.300	12.140	18.940	N	
T1000	-	1	2	990	990	4.000	5.230	26.000	33.400	24.190	31.590	160	
T1000B	-	2		990	990	2.400		16.200		14.380		160	
T1200	-	1	2	1.200	1.200	2.640	4.600	26.800	44.000	23.600	40.800	500	1.000
T1300	24	1		1.280	1.280	2.840		31.000		27.750		500	1.000
T1450	-	1		1.450	1.450	2.020	3.880	32.200	55.800	26.200	49.800	500	1.000

The number of ingots is related to the total weight of the cast:

- Minimum melt weight = 26.600 kg
- Maximum AOD capacity = 40.000 kg

Different combinations of ingots, weights or special requests regarding superalloys may be discussed with the Commercial Department.



ASONEXT
Steeled for the future

ASONEXT S.p.A. Società Benefit Unipersonale
Via Seriola 122 - 25035 Ospitaletto (BS) ITALY
P. +39030.6841011 - info@asonext.com
www.asonext.com